



Everything as a Service

Stratis Roumeliotis
Enterprise Sales Manager
HP Hellas



OUR PORTFOLIO STRATEGY

EMPOWERING ASSOCIATES | ENGAGING CUSTOMERS



From traditional to mobile, HP has in-store solutions to empower associates and engage customers



HP Retail Solutions portfolio

All-in-One systems



RP2

- Value All-in-One
- Intel Quad-Core Processors
- IP-54 rated, fan-less design



RP9

- Performance All-in-One
- Versatile, sleek-design
- Fan-based design



ElitePOS

- Retail Redefined
- Intel 7th gen processors
- Highly configurable for clean counters

Modular systems



MP9

- Small form factor
- Multi-purpose platform
- Flexible mounting locations



RP5

- Performance module system
- Multi-purpose platform
- Extensive connectivity and configuration options

Mobile Solutions



6" Mobile Retail Solution

- Leverage HP Elite x3, 3-in-1 hand-held device
- Barcode scanning jacket allows for increased operational efficiencies



12" Mobile Retail Solution

- Leverages HP Pro x2 612 G2
- Retail case adds protection and ability to add hand or shoulder strap as well as connect 3rd party payment device

Convertible Solutions



HP MX12 Retail Solution

- Leverages HP Pro x2 612 G2
- Enables mobile and fixed POS
- Extensive connectivity options
- Dock and lock security features



A close-up photograph of a heavy-duty metal safe dial. The dial is circular with a brushed metal finish and a central locking mechanism. It is surrounded by several dark, cylindrical handles with metallic caps. The background is a dark, textured surface, possibly the interior of the safe. The text "HP PCs & Printers security" is overlaid in white, sans-serif font across the lower half of the image.

HP PCs & Printers security



Security by the Numbers

200%

Rise in breaches due
targeting endpoint
devices

68%

of organizations
reporting
compromised laptops
in past 24 months

\$4.0
million

Average cost of
data breach

70%

of breaches due to
phishing

9 of
10

Number of visual
hacking attempts
successful

HP SECURITY STACK

DEVICE

IDENTITY

DATA

HP Manageability Integration Kit

Microsoft® SCCM (Certified) - Microsoft® Device Guard

ABOVE THE
OS

IN
THE OS

BELOW
THE OS

HP Sure Start Gen3

Self-healing with Runtime Intrusion
Detection

Protect Win 10 Secure Boot and Virtual
Security Mode

HP BIOSphere Gen3

Comprehensive BIOS Management

HP WorkWise

Proximity-based Authentication

HP Client Security Suite Gen3¹⁵

HP Multi-Factor Authenticate
Hardened Credentials and Policies
enforced by Intel Authenticate

HP SpareKey
Self-service Password recovery

HP Device Access Manager
Just-in-Time access for ports and devices

HP Sure View

Built-in Privacy Screen

HP Secure Erase

Permanent Data Removal on HDD/SSD

HP Sure Click

Browsing Security Solution

FIPS Certified Self Encrypting Drives

HW Data Encryption

World's most secure printers from HP



Challenges impacting companies today



Device proliferation

The number of devices to manage and secure are growing exponentially.

Multi-vendor SLA's create complexity and are tedious to manage.



iOS

Multi-OS complexity

iOS and Android devices outnumber Windows devices in business.

Operating system updates occur multiple times a year, at different frequencies.



Increasing security threats

Cyber attacks are becoming more sophisticated.

Data breaches are happening more frequently.



Strained IT resources

The time spent on managing endpoints and supporting users compete with delivering on strategic IT initiatives.

Today's lifecycle management practices are not sustainable.



9B commercial devices, **4.3** devices per employee by 2020











57% of companies had a security breach in past 12 months, costing **\$3.49M** on average

HP Device-as-a-Service (DaaS)



DaaS Premium plan details

 DaaS	Standard plan 	Enhanced plan 	Premium plan  Managed Service	
	 Devices	 Hardware Support	 Customer Success Management	 Analytics and Proactive Management
	<ul style="list-style-type: none">• HP desktops, notebooks, and workstations• Expanding to multiple device types and OS platforms in 2017	<ul style="list-style-type: none">• Next day onsite Break & Fix service• Accidental Damage Protection³• Defective media retention	Highly trained HP Service Agent support	Enhanced Plan plus: <ul style="list-style-type: none">• Windows Information Protection• Password Recovery• Application Deployment• 3rd Party and OS Patch Management• Wi-Fi provisioning

1. Prices exclude HP devices
2. Recommended end user prices for 36 month plan
3. Availability may vary between countries

Mobility on the go

For the mobile professional on the go

When you're a professional on-the-go, you need a solution as mobile as you are.

HP Elite x2 1012 G1 Tablet with Travel Keyboard
HP 3y Next Business Day Onsite Notebook Service
HP Professional Leather Case

€28.0¹ per month, 36-Month Subscription

4% savings vs upfront purchase, and **13%** savings in present value³

1. Financing and service offerings available through Hewlett-Packard International Bank plc (as regulated by the Central Bank of Ireland) and its subsidiaries and affiliates (collectively HPIB) in certain countries and is subject to credit approval and execution of standard HPIB documentation. Subscriptions to use are available for 24 or 36 month terms. Rates and terms are based on customer's credit rating, offering types, services and/or equipment type and options. Not all customers may qualify. Consumers may not apply. Not all services or offers are available in all countries. Other restrictions may apply. HPIB reserves the right to change or cancel this program at any time without notice.
2. Service levels and response times may vary depending on your geographic location. Restrictions and limitations apply HP services are governed by the applicable HP terms and conditions of service provided or indicated to Customer at the time of purchase. Customer may have additional statutory rights according to applicable local laws, and such rights are not in any way affected by the HP terms and conditions of service or the HP Limited Warranty provided with your HP Product.
3. Using 7% cost of capital

For those who need more – Workstation Solutions

For the demanding and creative professionals

Demanding professionals such as architects, engineers and designers need power, speed and reliability, day and night.

HP ZBook Studio G3 Mobile Workstation

HP Z23n 23" UNB display

HP Wireless keyboard & Mouse

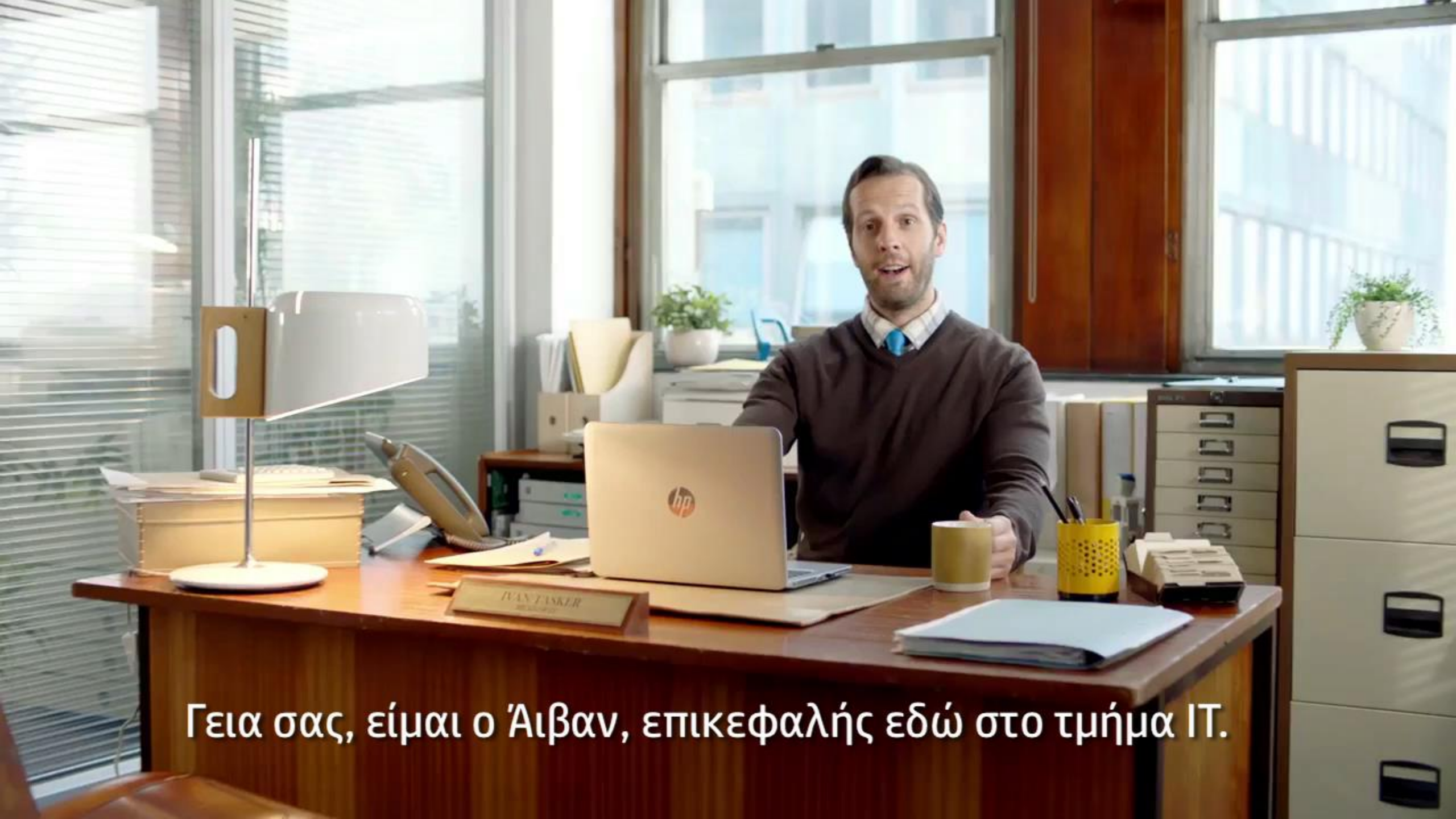
HP 3y Help desk by HP Care Subscription 1 Dev svc³

HP 3y 9x5 3CD CTR+DMR 95pct WS Only SVC

HP ZBook Dock with Thunderbolt 3

€63.5 per month^{1,2}, 36-Month Subscription

1. Financing and service offerings available through Hewlett-Packard International Bank plc (as regulated by the Central Bank of Ireland) and its subsidiaries and affiliates (collectively HPIB) in certain countries and is subject to credit approval and execution of standard HPIB documentation. Subscriptions to use are available for 24 or 36 month terms. Rates and terms are based on customer's credit rating, offering types, services and/or equipment type and options. Not all customers may qualify. Consumers may not apply. Not all services or offers are available in all countries. Other restrictions may apply. HPIB reserves the right to change or cancel this program at any time without notice.
2. Service levels and response times may vary depending on your geographic location. Restrictions and limitations apply HP services are governed by the applicable HP terms and conditions of service provided or indicated to Customer at the time of purchase. Customer may have additional statutory rights according to applicable local laws, and such rights are not in any way affected by the HP terms and conditions of service or the HP Limited Warranty provided with your HP Product.
3. Available in selected countries. Check with your PBM



Γεια σας, είμαι ο Άιβαν, επικεφαλής εδώ στο τμήμα IT.



keep reinventing

Visit www.hp.com/go/daaS