



TELEVES

FIBREDATA: Cost Effective Multiservice High Speed Networks

Alberto Lopez
International Division
February 2017

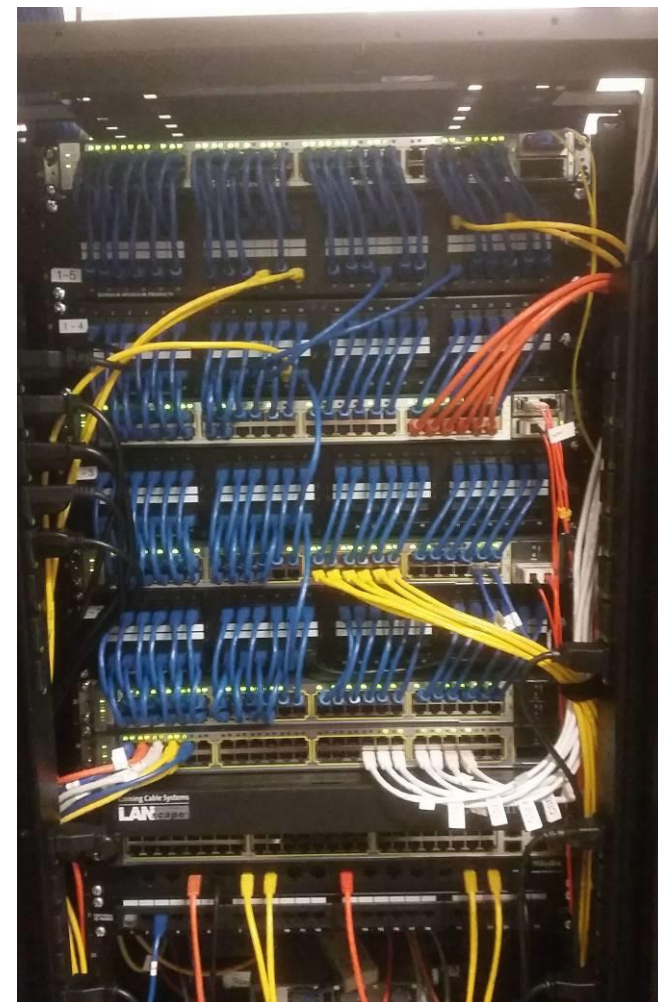
HOTEL REQUIREMENTS - DATA SERVICES (IP)

- ✓ GUEST expectations
 - Wireless High speed internet (video streaming, video conference, etc.)
 - wired connection as an option
 - VoIP
 - HD TV (IPTV or RF)
 - Connected game consoles (Play Station)
- ✓ HOTEL requirements
 - Secured network
 - Wireless network for maintenance (info about room readiness, damaged appliance, etc)
 - Energy management of rooms (remote activation of air conditioned, etc.)
 - Environment control (lighting, air fresheners, etc).
 - CCTV
 - Access Control – STAFF

TRADITIONAL DATA NETWORKS SOLUTION

- ✓ TRADITIONAL DATA NETWORKS, based on switches
 - Typically, per service:
 - One core switch per service
 - One switch per service per floor (riser)
 - Direct data cables from riser to the end point (rooms)
 - High network complexity
 - Distributed switches, active devices per floor.
 - Need of ventilated area per floor.
 - No visibility of the network
 - unless manageable switches (more costly)
 - Maximum cable length: 100 meters.
 - Longer distances to be covered with fibre links
 - Need of additional active devices -> More maintenance

Typical floor data distribution rack

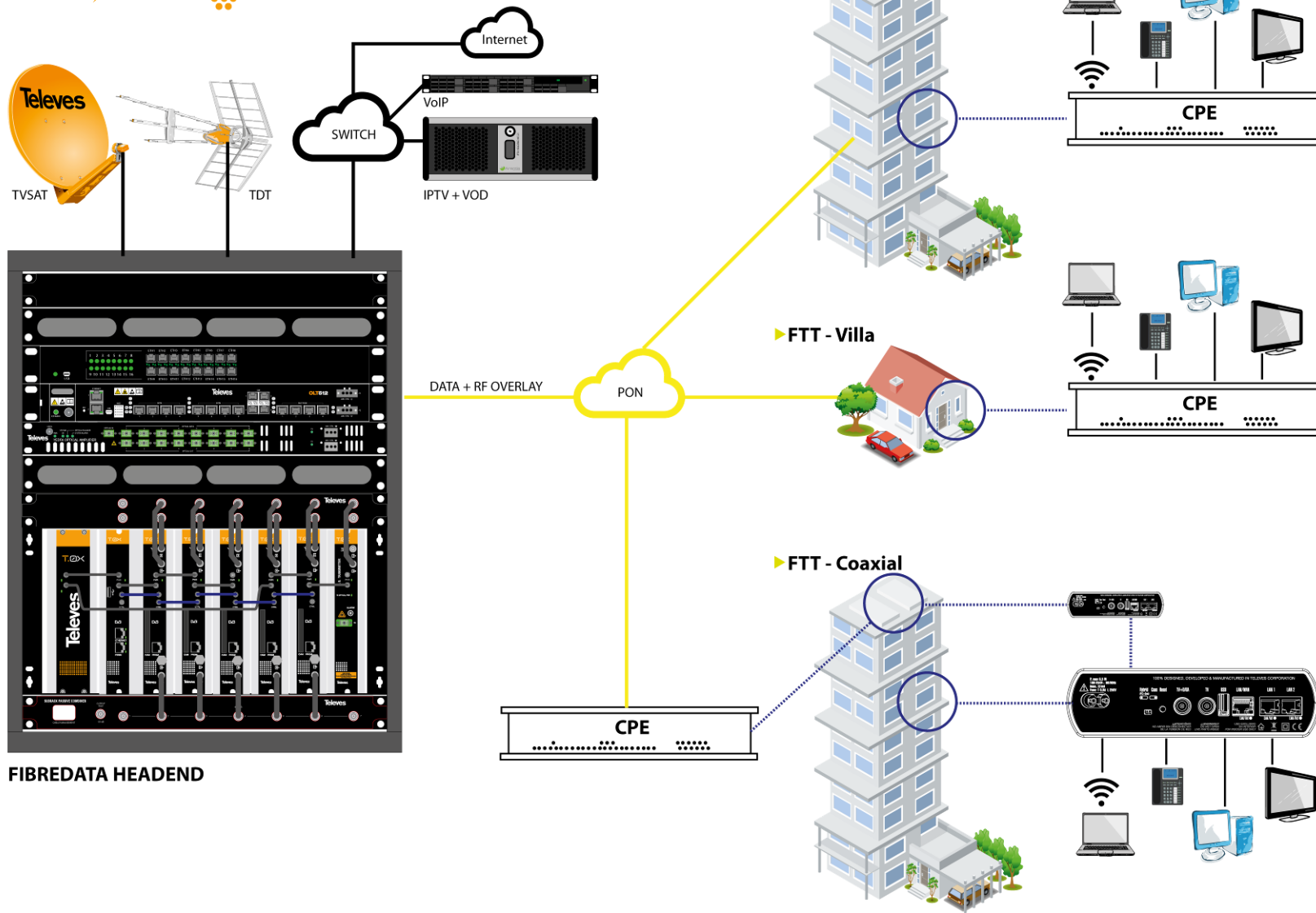


TRADITIONAL DATA NETWORKS SOLUTION

✓ CASE STUDY: HOTEL WITH 10 FLOORS & 24 ROOMS/FLOOR

- Per room, connections from the riser:
 - AP (Internet)
 - Wired Internet
 - TV (IPTV)
 - TLF (VoIP)
 - Game consoles (Play Station)
 - Energy Management
- Public area services, from the riser:
 - Connections to CCTV cameras
 - Connections to Access Control devices
 - Connections to Environment Control devices
- PER FLOOR
 - More than 125 cables from riser
 - 7 SWITCHES: Internet, IPTV, VoIP, Energy Management, CCTV, Access Control, Environment Control
- HEADEND: 7 CORE SWITCHES
- **TOTAL: 1250 data cables in the building**
- **AROUND 80 SWITCHES in the hotel!!!! COSTLY INSTALLATION AND MAINTENANCE**

FIBREDATA: MULTISERVICE HIGH SPEED NETWORK



FIBREDATA: MULTISERVICE HIGH SPEED NETWORK

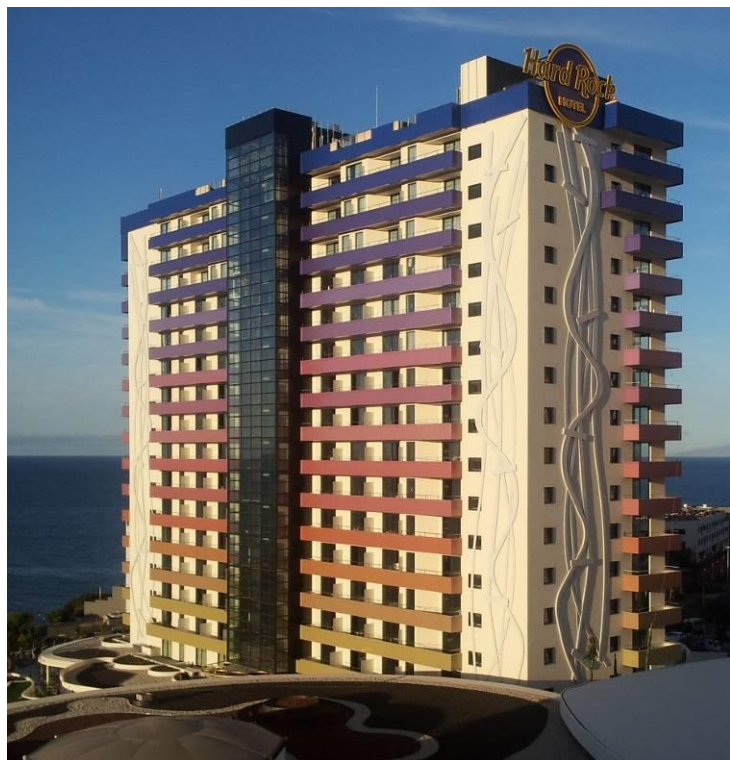
- ✓ Passive optical network. No active devices in the network
 - Just an optical splitter in the riser
 - No electrical consumption
- ✓ Complete visibility of the network and centralized management
 - How many people are connected to an AP?
 - Disconnected telephone
 - Missing CPE
 - Etc.
- ✓ Fiber-only network.
 - Future proof solution. More applications on the same infrastructure
- ✓ Gigabit capable network
- ✓ RF Overlay
 - Existing Coax TVs

CPE: Customer Premises Equipment



Data headend equipment

SOME HOTELS USING TELEVES SOLUTIONS IN THE WORLD...



Ευχαριστώ για την προσοχή σας